

MOBILITAT INSULAR. Intensitat Mitjana Diària (IMD) mensual

INSULAR MOBILITY. Daily intensity Average (IMD) monthly

Taula 1. IMD mensual 1997-2008 (estació E-318 Carretera Maó - Es Mercadal Punt km 20,4).

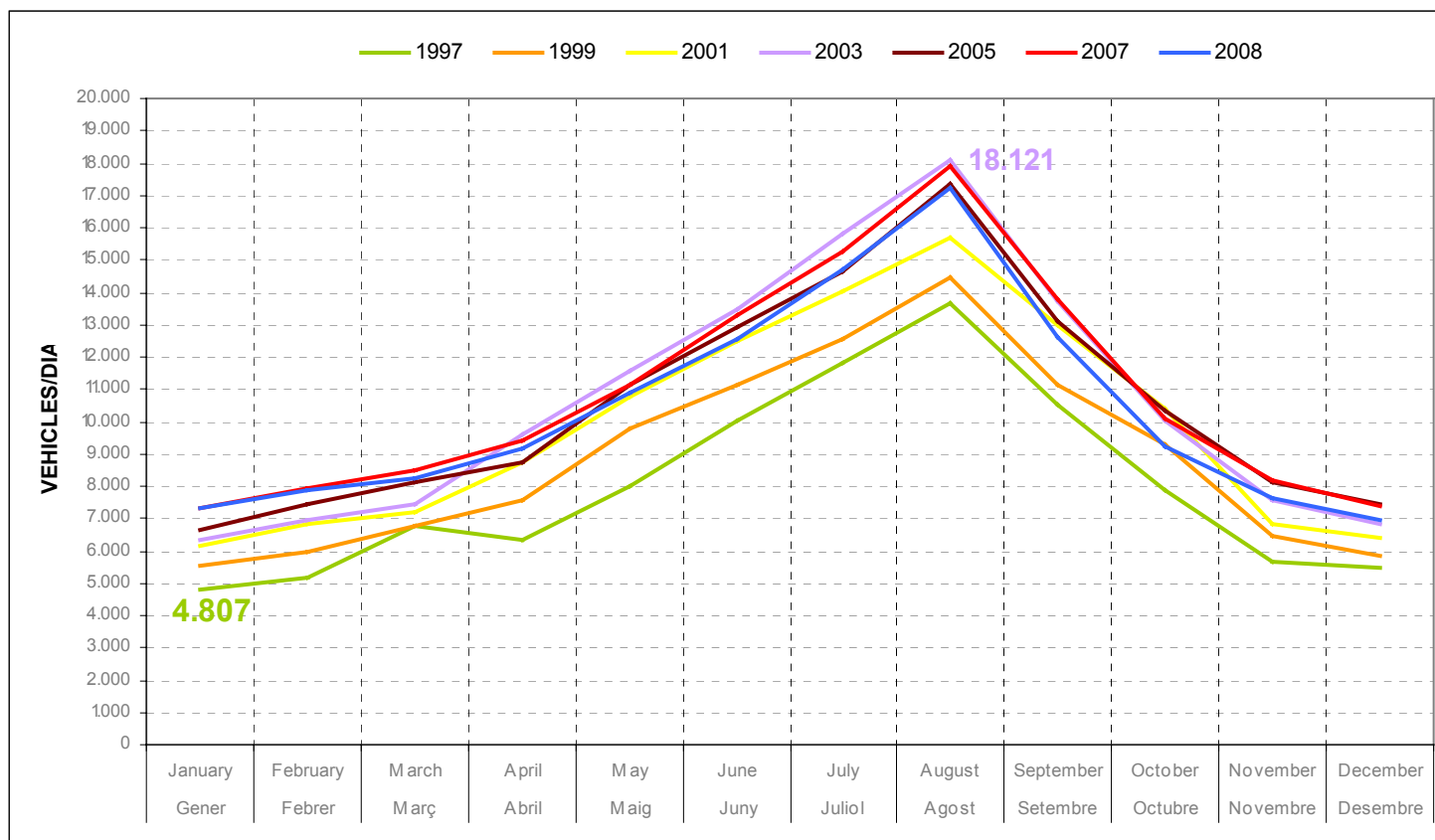
Table 1. Daily intensity Average (IMD) monthly 1997-2007 (Station E-318 road Maó - Es Mercadal km 20,4).

| Any | Gener | Febrer | Març | Abril | Maig | Juny | Juliol | Agost | Setembre | Octubre | Novembre | Desembre | Mitjana anual | Mitjana estiu | Mitjana hivern |
|-------------|----------------|-----------------|--------------|--------------|-------------|-------------|---------------|---------------|------------------|----------------|-----------------|-----------------|-----------------------|-----------------------|-----------------------|
| | <i>January</i> | <i>February</i> | <i>March</i> | <i>April</i> | <i>May</i> | <i>June</i> | <i>July</i> | <i>August</i> | <i>September</i> | <i>October</i> | <i>November</i> | <i>December</i> | <i>annual average</i> | <i>Winter average</i> | <i>Summer average</i> |
| 1997 | 4.807 | 5.163 | 6.794 | 6.325 | 7.997 | 10.007 | 11.796 | 13.672 | 10.544 | 7.891 | 5.652 | 5.472 | 8.010 | 10.318 | 5.702 |
| 1998 | 5.162 | 5.457 | 6.107 | 7.258 | 8.937 | 10.177 | 11.616 | 13.318 | 10.860 | 8.671 | 5.990 | 5.683 | 8.270 | 10.597 | 5.943 |
| 1999 | 5.520 | 5.999 | 6.759 | 7.570 | 9.789 | 11.126 | 12.542 | 14.447 | 11.133 | 9.285 | 6.491 | 5.837 | 8.875 | 11.387 | 6.363 |
| 2000 | 5.144 | 6.242 | 6.868 | 8.342 | 10.315 | 12.059 | 13.343 | 15.333 | 12.678 | 9.946 | 6.745 | 6.063 | 9.423 | 12.279 | 6.567 |
| 2001 | 6.163 | 6.851 | 7.223 | 8.755 | 10.782 | 12.517 | 14.030 | 15.700 | 12.973 | 10.376 | 6.825 | 6.430 | 9.885 | 12.730 | 7.041 |
| 2002 | 6.342 | 6.869 | 7.579 | 8.827 | 11.697 | 13.111 | 15.335 | 17.246 | 13.409 | 10.567 | 7.102 | 6.447 | 10.378 | 13.561 | 7.194 |
| 2003 | 6.368 | 6.924 | 7.446 | 9.592 | 11.585 | 13.458 | 15.794 | 18.121 | 13.698 | 10.051 | 7.582 | 6.829 | 10.621 | 13.784 | 7.457 |
| 2004 | 6.801 | 7.337 | 7.656 | 8.765 | 11.114 | 12.653 | 14.316 | 16.557 | 12.819 | 10.147 | 7.574 | 6.973 | 10.226 | 12.934 | 7.518 |
| 2005 | 6.676 | 7.450 | 8.097 | 8.744 | 11.148 | 12.920 | 14.633 | 17.339 | 13.119 | 10.348 | 8.113 | 7.432 | 10.502 | 13.251 | 7.752 |
| 2006 | 7.110 | 7.557 | 8.095 | 9.306 | 10.980 | 12.908 | 14.704 | 17.605 | 13.287 | 10.044 | 8.115 | 7.214 | 10.577 | 13.255 | 7.900 |
| 2007 | 7.320 | 7.957 | 8.483 | 9.399 | 11.113 | 13.320 | 15.259 | 17.909 | 13.762 | 10.091 | 8.187 | 7.364 | 10.847 | 13.576 | 8.118 |
| 2008 | 7.301 | 7.875 | 8.275 | 9.162 | 10.865 | 12.528 | 14.678 | 17.218 | 12.601 | 9.207 | 7.626 | 6.964 | 10.358 | 12.850 | 7.867 |

Font: Departament de Carreteres del Consell Insular de Menorca. Elaboració: OBSAM

Gràfic 1. Intensitat Mitjana Diària (IMD) mensual 1997-2008 (estació E-318 Carretera Maó - Es Mercadal Punt km 20,4).

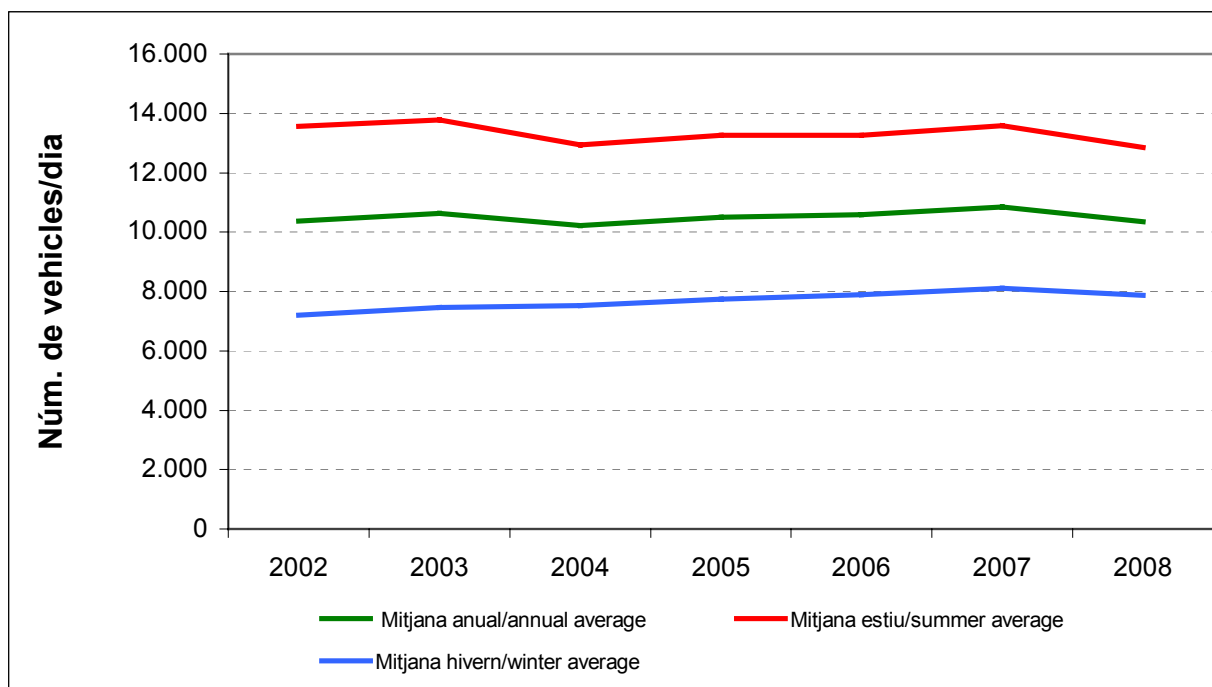
Graphic 1. Daily intensity Average (IMD) monthly 1997-2008 (Station E-318 road Maó - Es Mercadal km 20,4).



Font: Departament de Carreteres del Consell Insular de Menorca Elaboració: OBSAM

Gràfic 2. Intensitat Mitjana Diària (IMD), anual, hivern, estiu, 2002-2008 (estació E-318 Carretera Maó - Es Mercadal Punt km 20,4).

Graphic 2. Daily intensity Average (IMD) annual, winter, summer 2002-2008 (Station E-318 road Maó - Es Mercadal km 20,4).



Font: Departament de Carreteres del Consell Insular de Menorca Elaboració: OBSAM