



OPENING HOURS

Opening hours: June to September

Tuesday to Saturday: 10h - 19h

Sundays and public holidays: 10h - 14h

Opening hours: October to May

Tuesday to Saturday: 10h - 18h

Sundays and public holidays: 10h - 14h

Closed on Mondays

Further information and reservations for guided tours: tel. (+34) 972 556 533 / info@museuexili.cat

PRICES

Entrance price: 4 €

Senior citizens over 65, unemployed persons, children under 7 years of age, school groups and teachers: **free of charge**.

Discounts available for the retired, young people, students and groups.



Exile Memorial Museum Consortium:



With the sponsorship:



Collaboration:



memorial
democràtic

MUM/E

Museu Memorial
de l'Exili

C. Major, 43-47
17700 · La Jonquera
Tel. 972 556 533
Fax. 972 556 534
info@museuexili.cat
www.museuexili.cat

Educational Service

2010-2011

MUM/E

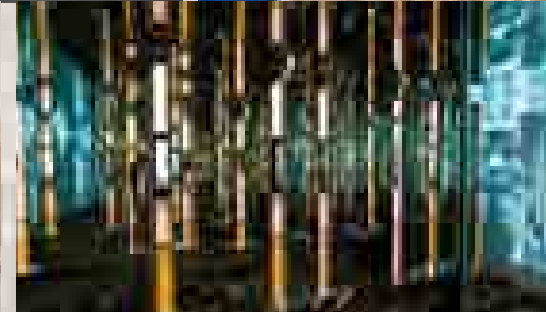
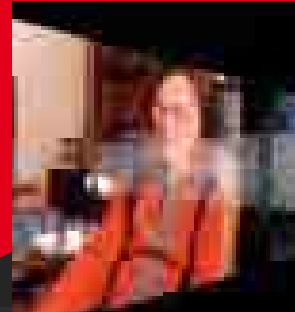
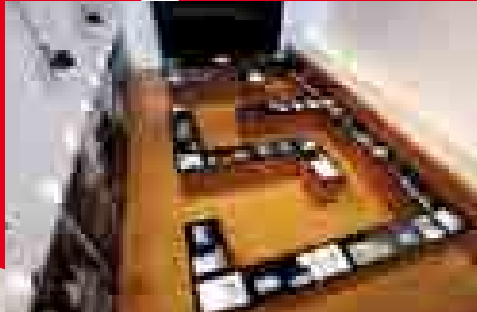
Museu Memorial
de l'Exili

PRESENTATION

■ The Exile Memorial Museum (MUME) in

La Jonquera promotes recalling the history and memory of our land's exiles, and particularly the Republican exile that emerged from the outcome of the Civil War of 1936-1939. Exile, however, is a phenomenon of universal proportions that has affected and continues to affect large groups of men, women and children all over the world, and has to be considered in all its dimensions: social, economic, psychological, political and cultural. La Jonquera, along with other frontier towns such as La Vajol, Agullana, Darnius, Portbou, Molló, Puigcerdà and others, was a place that had to be passed through during the flight into exile of hundreds of thousands of citizens who had fought for democracy and the 1931 Republic.

The MUME sets out to be a space in which to think back to and undertake a historical reflection in which the example and memory of so many personal, collective and political experiences serve as a testimony to and body of learning for future generations.



EDUCATIONAL SERVICE

The MUME educational service is at the disposal of students and teachers and educators from all walks of learning and, in general, anybody wishing to reflect upon questions such as collective memory, individual memories and the recent history of Catalonia and Spain, Second-World-War Europe, the Nazi genocide or the Americas that took in so many Republican exiles. But also about the exiles brought on by other genocides and other fratricidal or international confrontations that started during the First World War and continue down to our days.

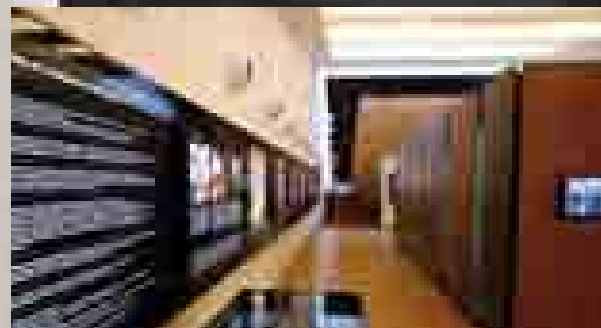
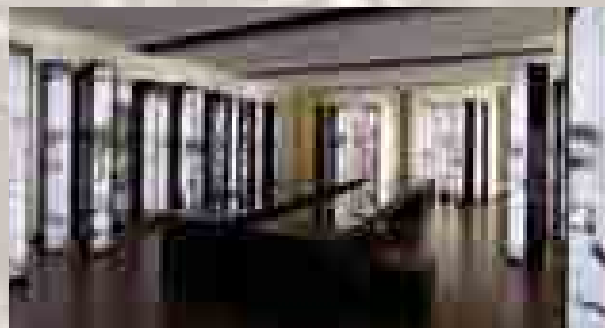
The team of educators is made up of professionals from various disciplines and specialists in cultural-heritage education and services.

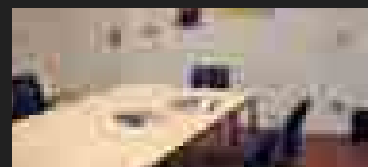
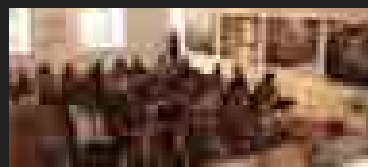
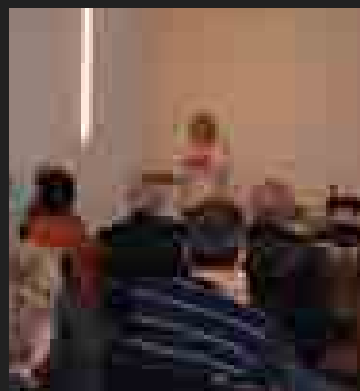
The Educational Service of the MUME offers you:

- Advice and guidance on preparing the activities that the Museum offers.
- Design of teaching tools and resources adapted to school curricular objectives.
- On-line support through the Museum website, with files of the detailed proposals and materials for working on before and after the visit.
- Visits can be arranged in Catalan, Spanish or French.

EDUCATIONAL PROPOSAL

- A. Guided visit
- B. Visit and workshop activities
- C. Routes of the Exile





A - GUIDED VISIT

Suitable for groups of students or adults

The guided visit to the Museum starts out by referring to the universality of the phenomenon of exile, and then moves straight on to recount the 1939 exile. Attention is directed at its causes, on the one hand and, on the other, a look is taken at the complexity of the labyrinth into which thousands of refugees passed once they had crossed the border. The voices of the witnesses, with their personal journeys and experiences, alongside the Museum's permanent exhibition, turn the visit into an experience of great emotional impact, making us aware of the importance of the events and making us feel solidarity with similar contemporary situations.

In short, the visit is interactive, open and put together to suit the particular group.

· Duration: **1.30 hours**

· Price per person: **5 €** / Groups of up to 20 persons: **100 €**

B - VISIT AND WORKSHOP ACTIVITIES

Aimed at students. Two proposals are offered, depending on age

1. "News from Exile"

VISIT AND WORKSHOP ACTIVITIES FOR
UPPER-PRIMARY | LOWER-SCHOOL SECONDARY PUPILS

Organised as group-classroom work, it consists of a visit to the MUME and a workshop in the classroom at the Museum itself, in addition to some suggestions for work before and after at school.

The students will work over the course of a morning in a participatory and fun way as reporters and experts in investigative journalism, probing into the world of the collective and individual memory by means of techniques inherent to oral history, on gleaning information from other documentary sources and on treatment and communication using television resources.

· Duration: **3 hours** / Price per pupil: **8 €**

· Groups of up to 20 pupils: **160 € / group**

2. "Exile and the Mass Media"

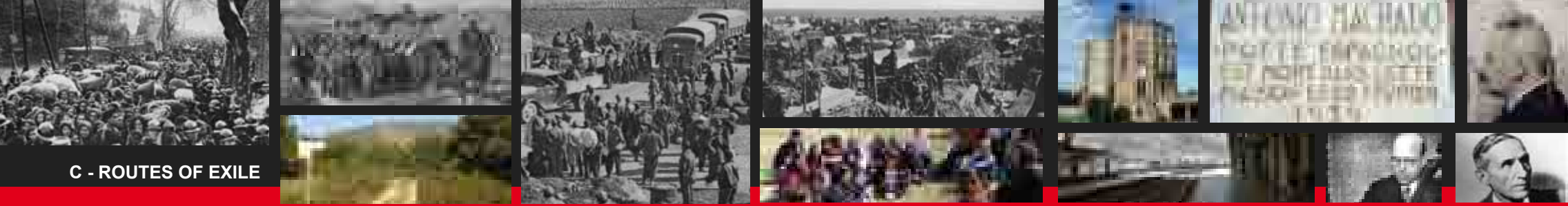
VISIT AND WORKSHOP ACTIVITIES FOR
14-18 YEAR-OLD SECONDARY STUDENTS

Organised as group-classroom work, it consists of a visit to the MUME and a workshop in the classroom at the Museum itself, in addition to some suggestions for work before and after at school.

This module sets out to have the girls and boys work over the course of a morning in a participatory and fun way on the relationship between a historical phenomenon such as exile, universal in time and space, with the communications media, the written press, radio, television and cinema, for the purpose of establishing an interplay of comparisons between the 1939 view of exiles and that which is currently predominant in the media concerning present-day exiles.

· Duration: **3 hours** / Price per student: **8 €**

· Groups of up to 20 students: **160 € / group**



C - ROUTES OF EXILE

1. "Paths of Exile"

AIMED AT GROUPS OF UPPER-PRIMARY, ALL SECONDARY-LEVEL STUDENTS | GROUPS OF ADULTS

La Jonquera and nearby towns were privileged witnesses of the Republican exile and important scenarios in the final phase of the Republican government in Catalonia (the Generalitat) and of the withdrawal of hundreds of thousands of men and women. The route travels one of the paths into exile taken by, among other people, the main leaders of the Generalitat and the government of the Republic in order to cross the frontier into France.

This is the route of exile near La Jonquera: Agullana, La Vajol, Coll de Lli and on as far Les Illes, the first town one comes across on the other side of the border. The route finishes with the visit to the MUME.

- Duration: **1 day (5-6 hours)** / Price per adult / student: **12 €**
- Groups of up to 20 adults / students: **240 € / group**

2. "Memories of Exile"

AIMED AND MIDDLE AND UPPER-SCHOOL SECONDARY STUDENTS | GROUPS OF ADULTS

As the testimonies recount, on the other side of the border exile became for many a tragedy of immense proportions. France was unprepared for the arrival of hundreds of thousands of people, and its reaction came late and involved organising refugee camps that were to become little better than concentration camps, on the beaches of Argelers, Sant Cebrià and other municipalities on the Mediterranean coastline, as well as in other inland locations. Amidst such a disaster, the action of some French citizens and international aid organisations, which took specific shape in initiatives such as the Elna Maternity Home, deserve to be remembered as a counter-action of humanity and a song of hope. The activity starts with a visit to the MUME, followed by setting out on the route of exile in the direction of Argelers and the Elna Maternity Home.

- Duration: **1 day (5-6 hours)** / Price per adult / student: **12 €**
- Groups of up to 20 adults / students: **240 € / group**

3. "Memories and paths of exile"

AIMED AND MIDDLE AND UPPER-SCHOOL SECONDARY STUDENTS | GROUPS OF ADULTS

This is a two-day route, with the first day's itinerary beginning in the Exile Memorial Museum (MUME) at La Jonquera, and continuing on to Argelès-sur-Mer, Republican refugee camp and burial place. The next stop is the Maternity Home at Elna, an oasis of hope and solidarity where 597 babies were born to Catalan, Spanish, Jewish and gypsy refugee women. The second day's itinerary starts in Agullana village and leads over the border to Les Illes village on the French side, following the route taken in February 1939 by thousands of exiled persons. These included a large sector of the Catalan intelligentsia; leading politicians from Catalonia, the Basque country and the rest of Spain; and the so called «Treasure of the Republic». The route will be covered partly by car and partly on foot.

- Duration: **2 days** / Price per adult / student: **20 €**
- Groups of up to 20 adults / students: **400 € / group**

4. "The exile of the intellectuals. Collioure and Antonio Machado"

SUITABLE FOR SECONDARY SCHOOL STUDENTS (MIDDLE AND UPPER LEVELS) | GROUPS OF ADULTS.

The Republican exodus at the end of the Spanish Civil War brought about a major cultural loss for the country. Great intellectuals (writers, scientists...) had to leave their occupations and plunge themselves into the uncertainty of exile. The language persecution policy of the Franco dictatorship resulted in a complete debacle within the Catalan cultural circles. Injustice prevailed over progressive ideas and creative freedom throughout the whole of Spain. A prime example is the case of the poet Antonio Machado who died, ill and exhausted, shortly after crossing the French border. He is buried in the Collioure cemetery. This route underlines the relationship between the Republican exile and the cultural world. The itinerary starts off with a visit to the Exile Memorial Museum (MUME) at La Jonquera and continues on towards Collioure, where the poet Antonio Machado and his family arrived from Barcelona on the last leg of their painful flight from Franco's victory. Texts by Machado and other exiled writers will be read and discussed along the route.

- Duration: **1 (5-6 hours)** / Price per adult / student: **12 €**
- Groups of up to 20 students / adults: **240 € / group**

5. "Portbou and Walter Benjamin. The Retirada (retreat) and the Second World War"

SUITABLE FOR SECONDARY SCHOOL STUDENTS (MIDDLE AND UPPER LEVELS) | GROUPS OF ADULTS.

Walter Benjamin, the German philosopher of Jewish origin, reached Portbou in late September 1940 in his flight from the German occupation of France. On learning that the Spanish authorities intended to deport him back to Vichy France and effectively prevent him from going to the United States, he took his own life in the hotel where he was staying. The death of this major European intellectual is but one more example of the role of the Pyrenean border during the Second World War, as well as the involvement of the Franco dictatorship with the Axis forces. The route starts in the Exile Memorial Museum (MUME) at La Jonquera with a brief introduction to the post-war period under the Franco regime and the Second World War. The itinerary then continues on towards Portbou, following the route taken by Walter Benjamin, and ends up at Portbou cemetery and Dani Karavan's sculptural monument, with readings and discussions on texts by the German thinker and other writers associated with the events of the period.

- Duration: **1 day (5-6 hours)** / Price per adult / student: **12 €**
- Groups of up to 20 students / adults: **240 € / group**

6. "Pau Casals and Pompeu Fabra: Two Key Figures in Prades"

ROUTE OF EXILE FOR SECONDARY SCHOOLS AND ADULTS

Two key figures, Pau Casals and Pompeu Fabra, and a place of refuge, Prades, will be the setting and the protagonists of the route during which we will learn about the importance of two major personalities in contemporary Catalan culture. Pompeu Fabra (1868-1948) died in Prades after a brilliant career as a champion of the Catalan language with the publication of a grammar (1918) and a dictionary (1932), among other works. In 1932 he was named Professor of Catalan Language at Barcelona University. Pompeu Fabra embodies the intellectual victim of the barbarism brought about by the Franco dictatorship after the Civil War.

Pau Casals (1876-1973) was one of the most important musicians and composers of the 20th century. His commitment to democracy and the fight against fascism were exemplary. From January 1939, the moment he went into exile, he settled in Prades, where he lived until 1957. From that village he began numerous aid campaigns for Republican exiles, started cultural initiatives of resistance and stayed firm in his condemnation of the Franco regime.

- Duration: **1 day** / Price per adult / student: **12 €**
- Groups of up to 20 students / adults: **240 € / group**

Museum Memorial de l'Exili

Children's holiday-stay houses. Consult the MUME.