



RIBERA D'EBRE

feast 🍷 nature 🌿 sport 🏄 culture





FEAST AND CULTURE

THE FEAST OF SANT ANTONI IN ASCÓ

January 2013

Declared a national and county interest

The Feast of Sant Antoni kept alive traditions that are lost in time and make it unique: the maintenance of folds, the Three Tombs, the distinction of the figures and clavari Majoral, racing horses and donkeys, the lighting of the bonfire danced right around with music and dance themselves.

FIRE AND PUSHING; SANT ANTONI IN TORRE DE L'ESPANYOL

January 2013

The feast of Sant Antoni in Torre de l'Espanyol includes all the people around the campfire as a central element. The danced, and a single local custom, the pushing, give a magical touch to a traditional night of fire and the winter festival in the town.

THE FEAST OF SANTA AGDA IN RIBA-ROJA D'EBRE

February 2013

Declared a county interest

Organized by the women of the village has become a winter festival of the population due to the large number of people involved and events are held. Since its inception on 5 February 1986 was the example that has spread to most municipalities in the region.

VIACRUCIS ON GOOD FRIDAY IN MÓRA D'EBRE

Good Friday

Declared a county interest

At 7 am the Viacrucis comes from the priory church and paraded through the streets that lead us to Calvary accompanying images of the Knights of Christ, the Sorrowful and Veronica. Stresses the traditional descent of the stairs to Calvary, to the castle. A large audience is concentrated at the foot of the fortress to see the decline of the images.

THE MOORISH MORA IN MÓRA D'EBRE: THE VISIONS, ONE WORLD

7 and 8 July 2012

The residents of the market and the Christian, Jewish and Moorish neighbourhoods, give and atmosphere streets, environments and costumes, recreating an historic moment of peaceful coexistence.

The craftsmen of ancient crafts, theatre and street parades, tournaments, parades and traditional products, invites visitors to enjoy a party with an important historical character of diversity and tolerance.

EASTER FLIX: PROCESSION OF THE ENCOUNTER AND DESMES

Easter Sunday

Declared a county interest

A busy schedule of events lay as "caramelles" (typical religious songs of joy) of jacks or dance chapel on Easter Monday, and religious ceremonies, notably the Procession of the Encounter. The head of the Armed with the Samaritan followed by the flags of the Sacred Heart, Our Virgin of Remedy and Saint Anthony and the Blessed Sacrament. Close Our Virgin with the Sorrows's Brotherhood and a group of slaves. The square is the representation of the meeting of the Virgin Mary with the Risen Christ and the Samaritan's "Desmes" recited, ending with the breaking of the pitcher.

CORREFOC IN GARCIA

18 August 2012

Performance award for best cultural event of the Terres de l'Ebre in 2003. The festival begins with cultural shows and traditional music. A huge fireworks and thunder gives the final output. Correfoc devils and spectators from all over the Catalan Countries can run under it and enjoy a real rain of fire. End the party with a big splash and live music until sunrise. Before the correfoc, takes place the correfoc for children.

CORREFOC IN RASQUERA

4 August 2012

It is the oldest correfoc in the region. With its wellknow beast, the "Fardatxo" of Rasquera. It is, for sure, for lovers of fire.

CORREFOC IN RIBA-ROJA D'EBRE

28 August 2012

It is one of the main events in the wold of fire throughout the Ebre zone and the closing of the festival. Includes a performance inspired by elements of local history (the Templars) and mythological costumes.



CULTURE AND HERITAGE

CASTLE CARLIST FLIX

Around a triangular fortification tower. Built by the Carlist on a hill in the middle of the meander, a protected centennial passing boat through the Ebre towards Lleida. Considered operating since the First and Third Carlist War. Visit_By appointment on the phone: 977 41 01 53, Flix City Council.

CASTLE MIRAVET

Imposing Moorish castle and temples built in the thirteenth century in a privileged position on the Ebre.

Visit_All year Tuesday to Sunday, including holidays: 1 / 10 to 31/05; from 10 to 13.30 and 15.00 to 17.30 pm; on 1/06 to 30/09 from 10 to 14 and from 16 to 20. Closed Mondays except holidays, 25 and 26 December and 1 and 6 January. The ticket office and entrance close 30 min. before closing time. Tel. 977 40 73 68

CASTLE MÓRA D'EBRE

Located in the upper old town, was owned by Entença Barony. In the tower stands rifle restored.

Visit_Easter. Summer: July, August and until 11 September: from 10.30 to 13 and 17 to 20 pm (closed on Mondays). Free admission.

INTERPRETATION CENTER OF RAILWAY MÓRA LA NOVA

Interactive multimedia that brings visitors to the historical reality of the world's railways. Visit_Saturdays, Sundays and holidays from 11.30 am to 13.30 pm and 17.00 pm to 19.00 pm. Other days by appointment phone: 667 418 899. More information: www.appfi.net and tel. 977 190 572 – 667 418 899.

INFORMATION CENTER OF POWER IN ASCÓ – NUCLEAR POWER PLANT

The center tries to explain, in a very clarifying way, the basic and many times unknown concepts of energy generation models, the radiation safety and nuclear fuel.

Fully interactive.

Visit_By appointment on the phone: 977 41 52 30 or via web form www.anav.es

ARCHPRIEST CHURCH OF SANT JAUME IN TIVISSA

Magnificent temple which mixes the Gothic, Renaissance and Baroque. Includes three parts: old church, the chapel of Roser and the mew church. The most curious and makes the church unique is that on the laps of the ancient temple, in the nineteenth century, they built a new church, so that there is one inside the other. Information and visits_Sightseeing tours by reservation in the tourist office (977 41 75 51 / turisme@tivissa.altanet.org).

OLD CHURCH IN GINESTAR

Located in the old, unique building is the oldest of the population. Built in three historical stages have: a late-Roman ship of the thirteenth century, two side sections and a Gothic chapel with around the fifteenth century and a late Renaissance aggrandizement. Visit_By appointment on the phone: 977 40 90 05, Ginestar City Council.

IBERIANS'S ROUTE

IBERIAN SETTLEMENT OF CASTELLET DE BANYOLES - TIVISSA

6 km west of Tivissa Iberian sites is one of the largest and most important of Catalonia. It occupies an excellent strategic position, with an extraordinary view over the river Ebre and orchards.

IBERIAN ESTABLISHMENT SANT MIQUEL - VINEBRE

On the left bank of the river Ebre, just over a mile southwest of Vinebre. We found remains of buildings dating from the last quarter of the second century BC and the second half of the first century BC. The first weekend in October, in the Iberian Weekend, there is a torchlight walk from the Iberian establishment to the town, and a typical Iberian snack.



FAIRS

LIVESTOCK AND CRAFTS FAIR IN RASQUERA

5 and 6 May 2012

Meeting the varied craft complement the spectacular descent of white goat herds.

MEDIEVAL MARKET AND ARTS AND CRAFTS FAIR IN ASCÓ

19 and 20 May 2012

You will find a large sample of craft, accompanied by food crafts, shows, music exhibitions with period instruments, camels, workshops for the young and the old...

BOOK FAIR EBRENC · LITTERARUM, LITERARY FAIR EVENTS MÓRA D'EBRE

1, 2 and 3 June 2012

Book fair of the Ebre counties and fair of the Catalan language shows.

DAY OF THE CHERRY AND THE FAIR OF "CANTERERS" MIRAVET

10 June 2012

Dyad festive and popular activities revolve around the town's two flagship products, cherries and "càntirs" (pitchers). You will find an exhibition of these products directly from the hand of its producers.

THE PEACH FESTIVAL IN BENISSANET

15 July 2012

Fruit Companies and cooperatives in the area are over fifty varieties of peaches that are grown in Benissanet.

THE HUNTER FAIR – CAZAFIR IN MÓRA D'EBRE

8 and 9 September 2012

Contest monograph devoted to the hunting of recognized importance inside and outside Catalonia.

THE "RAURE", TRADITIONAL ARTS AND CRAFTS FAIR IN GINESTAR

30 September 2012

Exhibition of products and traditional crafts of Ginestar and the region, where you can find demonstrations of ancient crafts and traditional crafts products and street animation.

AGRICULTURAL, LIVESTOCK AND INDUSTRIAL FAIR IN MÓRA LA NOVA

25, 26, 27 and 28 October 2012

Since 1831 it has been held continuously. It is multisectoral. Agriculture, livestock and machinery exhibitions are held. It includes a wine fair. OTHER FAIRS IN MÓRA LA NOVA: INTERCOMARCAL FAIR OF OIL _ 26 and 27 January 2013, FAIR USED VEHICLES _ 14 and 15 April 2012, ANTIQUE FAIR _ 16 September 2012, TRADING FAIR FOR CHRISTMAS _ 15 and 16 December 2012

CHISTMAS FAIR AND A SAMPLE OF CAVA ASCÓ

1 and 2 December de 2012

Fair dedicated to Christmas: trees, nativity scenes, gifts, home ornaments, Christmas workshops, performances...

There are also a fair where cavas from Catalunya show and sell their products you can taste the cava as well as, products of Ribera d'Ebre.

GASTRONOMY

LOCAL PRODUCTS

CLOTXA

This dish is typical of farmers from the Ribera d'Ebre present today in many popular events. Every year, around February, the Feast of Clotxa is organized, in a different municipality. Clotxa starting to have a presence in the restaurants of the region.

PASTISSETS

It has a traditional cake very wellknown in Rasquera and in many towns and villages. Pleasant surprises: cake with spring clasp, muffins almond and egg white, coke fast, "corassons", brownies or cake recapte if you do not so sweet.

VIMBLANC

The vimblanc of Vinebre is a sweet wine. It has a strong tradition in the region, used in liturgical acts. Made with white wine, from the ancient grape variety of Garnacha and with Macabeo nowadays.

SWEET FRUIT

From the 60s and due to the expansion of irrigation, the cultivation of peach extends mainly south of the county. Today there are many varieties of peaches and nectarines, some very early and high quality reputation throughout. Along with the cherry are now an indisputable source of wealth for the region.

WINE AND OIL

The wines of Ribera d'Ebre, covered by DO Catalunya, areas as belonging to the DO Montsant or DO Tarragona. The emergence of new wineries witch look for the quality of many cooperatives have make appear high quality wines at great prices. Cooperatives and private oil mills have adapted effectively to the quality parameters required by the present oil market and is exceptional for varietal diversity, the way of culture or process, which produces oil "extraverages" and fruity, in many cases only because its composition is olive varieties that are not present in other regions.

OTHER

Also highlight the cheeses, sausages, honey, olives and nuts.



NATURE NAVIGATION THROUGH THE EBRE

RIVER NAVIGATION FROM ASCÓ- TO MIRAVET. LLAÜT "LO ROGET"

From Easter until the end of September, everyone can enjoy a trip in a faithful reproduction of the old llaüts (ancient boat). Musealized and with audio guides makes the trip from Miravet to Ascó.

Information: Tourist Office of Ascó. Tel. 977 40 65 83 · turisme@asco.cat
www.asco.cat

RIVER NAVIGATION AND ADVENTURE SPORTS

Canoeing, BTT, archery, hiking... ROGLES AVENTURA

Trav. de Llevant, 1 _ FLIX _ Tel. 649 60 58 65 – 977 41 02 40 · www.rogles.org

Kayak rental. AIGUADINS

C. Ample, 8_GINESTAR_ Tel. 620 55 44 92. www.aiguadins.com

Canoe rental. MORAVENTUR

C. Verge de Montserrat, 11_ MÓRA LA NOVA_ Tel. 977 40 11 46

Navigating the Ebre by boat _ RIU NATURA

C. de Bonaire, 79_ MÓRA D'EBRE_ Tel. 977 40 07 52 – 607 63 70 35 / Fax 977 40 17 66

The reservoir of Ribera-roja d'Ebre, rental house-boats to sail on the Ebre river.

BADIA TUCANA

Ctra. de Faió, km 6,8 _ RIBA-ROJA D'EBRE _ Tel. 977 26 51 61 - Fax 977 26 50 61
www.badiatucana.com

THE RIVER FESTIVAL

In Ribera d'Ebre, racing "muletets" or "pontones" a part of the most traditional festivals Flix, Móra d'Ebre and Móra la Nova.

Day 4 August 2012 Móra la Nova

Day 15 August 2012 Flix

Day 25 August 2012 Móra d'Ebre

11th RIBERA D'EBRE DOWNRIVER (FROM MÓRA TO ASCÓ)

September 2012

It takes place a competition of llaüts (ancient boats) which punctuates in the Catalan league.

SPORT AND NATURE

FISHERMAN'S PARADISE

The reservoirs of Ribera-roja and Flix and over 40 kilometres of the river make it possible. During the year we organize competitions at county, national and international level.

SEBES NATURE RESERVE IN FLIX

Exuberant vegetation, a reference point in watching birds, storks, horses... Complete structure of attention to individual visitors or groups: shelter, trails, viewpoints, observatories, walkways, signage. An ideal learning environment.

Information: Sebes Nature Reserve

Tel. 977 26 51 12 – 977 41 01 53

www.reservanaturalsebes.org · www.fut.es/~freixe/ · www.flix.altanet.org

At the "Mas Pitoia" there is the Interpretation Centre Camí de Sirga (a path next to the river witch helped moving the ancient boats for the trading). It has a small museum and it makes a revision of the antique uses of the river.

Walking around ... Ribera d'Ebre

There are forty routes for walking, cycling paths and marked trails in the region. You can download the guide at this link: www.riberaebre.org/ilercavonia/rutes/rutes.pdf

GR-99

The Ribera d'Ebre is included in the GR-99 long-distance natural path along the river Ebre (from its source to its mouth). More than 1200 km in 42 stages.

VIA FERRATA

In Tivissa you can find two via ferrata, one in the Margarita Tormo and another one in Barranc de la Foig (a gully). With difficulty levels: low, medium. Located in rock walls very close to the population.



GUIDED TOURS

ROUTE THROUGH THE OLD TOWN OF TIVISSA

1 hour and 30 minutes.

Throughout the year

Advance booking: Tourist Office (tel. 977 41 75 51 or turisme@tivissa.altanet.org)

ROUTE FOR SIGHTS OF VINEBRE

About 3 hours. Includes visit to Ca Don Joan, building of the sixteenth century and the birthplace of St. Enric d'Ossó, house-museum.

Advance booking: 977 40 57 81 or aj.vinebre@altanet.org - www.vinebre.altanet.org/

ROUTE THROUGH THE OLD TOWN OF ASCÓ

Approximately 2 hours

Throughout the year

Advance booking: Tourist Office (tel. 977 40 65 83)

LITERARY ROUTE ARTUR BLADÉ "BENISSANET, LITERARY LANDSCAPE" AND VISIT TO THE BOMBSHELTER OF THE GREAT SOURCE

Approximately 2 hours

Throughout the year

Advance booking: Tourist Office (tel. 977 40 79 15)

ROUTE TO THE IBERIAN SETTLEMENT OF TIVISSA

Approximately 1 hour

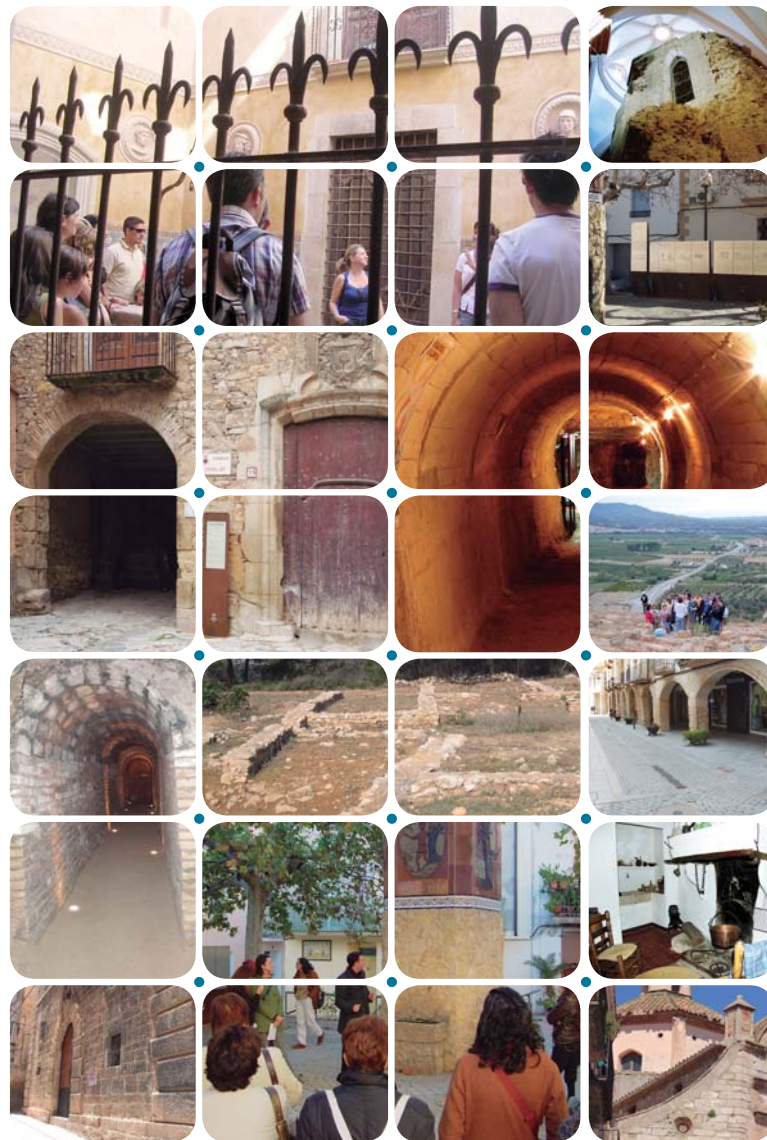
Throughout the year

Advance booking: Tourist Office (tel. 977 41 75 51 or turisme@tivissa.altanet.org)

GUIDED TOUR OF HISTORIC FLIX AND THE BOMBSHELTER OF ST. JOSEP STREET

Approximately 1 hour

Advance booking: Flix City Council (tel. 977 41 01 53). More information www.flix.cat



RIBERA D'EBRE

VILLAGES

ASCÓ
BENISSANET
DARMÓS
FLIX
GARCIA
GINESTAR
LA PALMA D'EBRE
LA SERRA D'ALMOS
LLABERIA
MIRAVET
MÓRA D'EBRE
MÓRA LA NOVA
RASQUERA
RIBA-ROJA D'EBRE
TIVISSA
TORRE DE L'ESpanyOL
VINEBRE



INFORMATION AND TRAVEL SERVICES

ASCÓ

Municipal Tourist Office · Pl. de l'Estació, 3 · Tel. 977 40 65 83

BENISSANET

Municipal Tourist Office · C. d'Antoni Gaudí, 1 · Tel. 977 40 79 15

FLIX

Mas del Director · Reserva Natural de Sebes · Tel. 977 26 51 12

MIRAVET

Municipal Tourist Office · Plaça Major, 1, baixos · Tel. 608 189 733
Lo Racó del Temple · C. del Riu, 14 · Tel. 977 40 73 93 – 656 26 63 98

MÓRA D'EBRE

Consell Comarcal de la Ribera d'Ebre · Pl. de Sant Roc, 2 · Tel. 977 40 18 51 · www.riberaebre.cat
Tourist Information Point passeig del Pont · Pl. de Sant Roc, s/n · Tel. 977 41 40 29

MÓRA LA NOVA

Tourist Information Point mas de la Coixa · Cruïlla C-12 i N-420 · Tel. 977 40 05 41

RASQUERA

Municipal Tourist Office · C. Ribera d'Ebre, 2 · Tel. 977 40 91 76

RIBA-ROJA D'EBRE

Municipal Tourist Office · Pl. de la Vila, 1 · Tel. 977 41 60 03

TIVISSA

Municipal Tourist Office · C. de la Foig, 5 · Tel. 977 41 75 51

LA SERRA D'ALMOS

Consorcio de Llaberia · C. Major, 19 · Tel. 977 41 75 44

CATALONIA PROVINCE OF TARRAGONA



TOWN HALL

ASCÓ · 977 40 50 06

BENISSANET · 977 40 70 05

FLIX · 977 41 01 53

GARCIA · 977 40 06 38

GINESTAR · 977 40 90 05

MIRAVET · 977 40 71 34

MÓRA D'EBRE · 977 40 00 12

MÓRA LA NOVA · 977 40 03 47

LA PALMA D'EBRE · 977 81 90 64

RASQUERA · 977 40 90 61

RIBA-ROJA D'EBRE · 977 41 60 03

LA TORRE DE L'ESpanyOL · 977 40 58 15

TIVISSA · 977 41 80 14

VINEBRE · 977 40 57 81



Diputació Tarragona



Consell Comarcal
Ribera d'Ebre

Pl. Sant Roc, 2 | 43740 MÓRA D'EBRE | T. 977 40 18 51 | ccre@ribera.altanet.org
www.riberaebre.org

